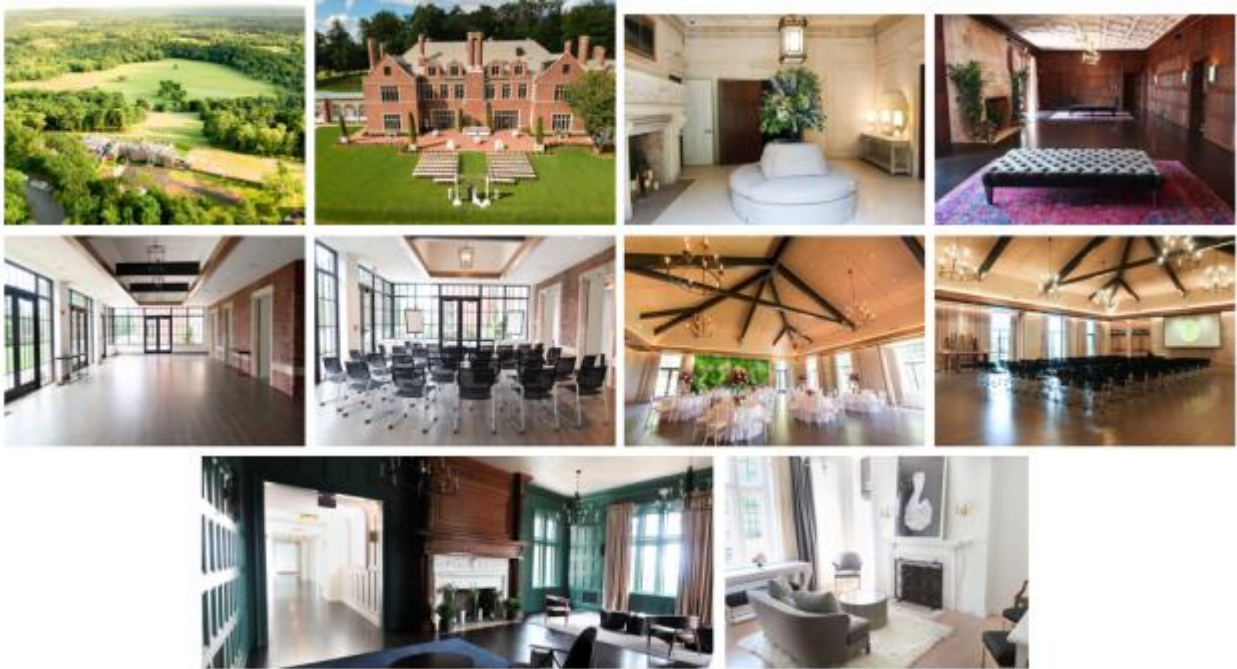




## Restored, polished and expanded, Mansion at Natirar is reborn as Northern New Jersey's finest event venue



Photos available via <http://bit.ly/2vMxebm>

Peapack-Gladstone, N.J. – Sept. 12, 2017 – Nine months of painstaking restoration and expansion have culminated in the triumphant debut of a new star on the New Jersey event scene: The [Mansion at Natirar](#). The 35,000-square-foot Tudor-era mansion, which at one point served as a residence for the sons of Morocco's former King Hassad II, has been transformed into a stunning venue with indoor and outdoor spaces ideal for weddings and other social celebrations as well as high-powered business meetings and events.

The centerpiece of a 90-acre estate in the rolling hills of Somerset County, the Mansion at Natirar is surrounded by another 400 acres of protected land along the Raritan River. Originally built as a private home in 1912, it now boasts an eclectic new design by Los Angeles-based SFA Design. The new look preserves the architectural and historic integrity of the original building while introducing fresh, modern elements that bring it into the 21<sup>st</sup> century.

### **New spaces**

The most significant change is the addition of a 5,000-square-foot **Grand Ballroom** accommodating groups of up to 225. The Ballroom's design connects guests to the surrounding

countryside through expansive windows and a spectacular 26-foot living wall of local flora. The 10 species of plants were thoughtfully chosen by Natirar's Master Gardener, Kim Wojtowicz, to be both inspirational and functional, as it cleans the air and reduces noise levels. Iron chandeliers hang from open beams across the vaulted ceiling, conveying a rustic elegance that is also carried through in its brick walls, wooden doors, and other design details.

Also brand new is **The Conservatory**, which connects the Ballroom to the Mansion. The Conservatory serves both as a stand-alone space and as a gathering and reception area for Ballroom events. Black metal-framed windows punctuate its brick façade, creating a modern farmhouse feel. Combined with the large glass doors, they provide ample natural light and sweeping views of the green landscape beyond.

A new **Conservatory Patio** is available as an al fresco gathering spot for small groups in warmer months. A linen sofa and lounge chairs, accented with throw pillows, invite conversation around the rectangular fire pit. Lanterns dangling from tree branches provide soft lighting at night, while simple landscaping keeps the focus on the natural surroundings.

### **Transformed spaces**

No detail has been overlooked in the restoration of the Mansion. Its original copper and slate roofing has been retained, along with its fine oak paneling, molded plaster ceilings, graceful arches, stone fireplaces, heraldic carvings, leaded glass windows, and period lighting fixtures. These original elements translate beautifully in an inspired new scheme.

Guests arrive through the Mansion's **Foyer**, presided over by a beautifully restored limestone fireplace. Original glass panels have been replaced with restoration glass and flooring is of fine porcelain. A circular sofa in a light, neutral fabric provides an inviting spot to relax.

Bridal parties will find a serene retreat, ideal for last-minute preparations or a moment of respite, in the new **Bride's Room**. The intimate room features a soothing lavender palette against white paneled walls and is accented with luxe textures and fabrics.

The **Women's Restroom** is light, feminine and modern with paneled white walls and stalls, white marble floors with a gray vein, and modern, simple fixtures. The **Men's Restroom** is masculine and bold, with white stone walls and floors, modern sconces, sleek fixtures and floating dark stone counters.

### **Existing spaces**

Set apart from the Mansion in the estate's original Carriage House, Natirar's award-winning restaurant, **Ninety Acres**, offers a choice of several private dining environments, among them a glass-enclosed **Private Dining Room**, seating 18 with view of the Kitchen Garden, and a **Wine Cellar** with a private bar and garden patio for 40. Also available is **Natirar's Cooking School**, a state-of-the-art venue with a demo kitchen and cooking stations for up to 40 participants. The school specializes in one-of-a-kind corporate teambuilding and other culinary-themed group events.

Natirar's expansive grounds and hilltop setting, with its sweeping views of the countryside, make it an ideal choice for outdoor wedding ceremonies and warm-weather social and corporate events. The **Kitchen Garden** in particular, its wide mulch path lined by rows of flowers, is a sought-after spot for small weddings.

## **Culinary Experience**

Expert food and beverage services at the Mansion afford event attendees the same distinctive “Table at the Farm” culinary experience as guests of Ninety Acres. Menus designed by Executive Chef David C. Felton showcase the bounty of the estate’s own 12-acre Farm at Natirar and Kitchen Garden, and are complemented by inspired seasonal cocktails and an extensive wine cellar. Natirar’s one-event-at-a-time policy ensures each group benefits from the full attention of the catering and events team.

For more information about private events at Natirar, call 908-901-4708.

## **About Natirar**

Natirar is one of the country’s most bucolic retreats, formerly owned by the King of Morocco, and set on a 500-acre estate in New Jersey’s Somerset Hills. It is a public private partnership between Somerset County and Robert Wojtowicz, Natirar’s founder. In 2017 a comprehensive renovation to the historic Natirar Mansion was completed, including restoration to the 1912 Tudor and the addition of a new Grand Ballroom, ideal for galas, weddings and exclusive meetings. Natirar already boasts one of New Jersey’s most acclaimed restaurants, Ninety Acres, built in the estate’s restored carriage house, which includes a cooking school, a private club and a 12-acre farm. Secluded, yet easily accessible, the Natirar estate is less than an hour from New York City and 90 minutes from Philadelphia. [www.natirar.com](http://www.natirar.com)

###

### **Media Contact:**

Mary Gendron  
Eric Mower + Associates  
212-980-9065  
mgendron@mower.com